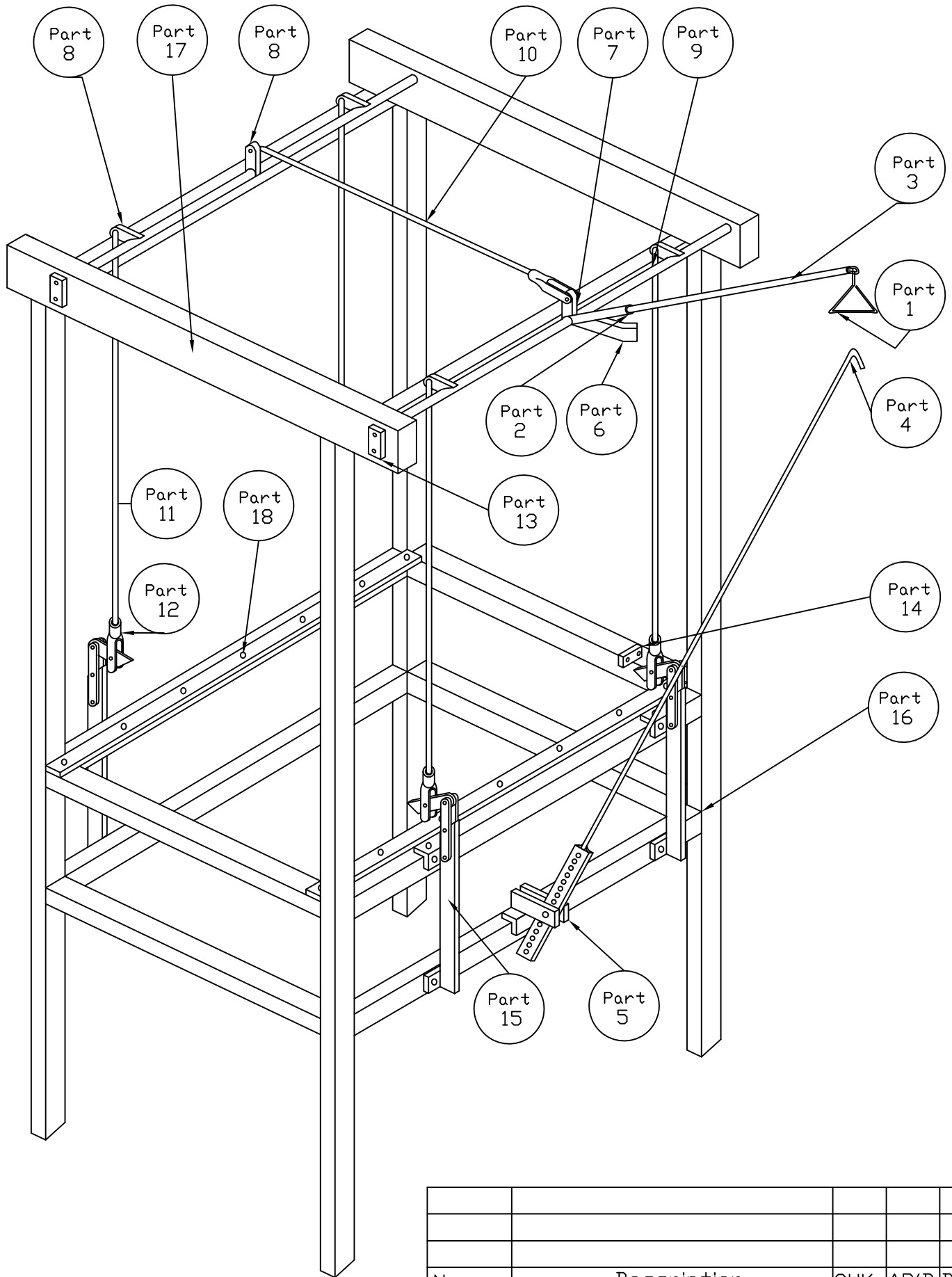

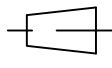


DO NOT SCALE



No.	Description	CHK	AP'D	DATE
REVISIONS				

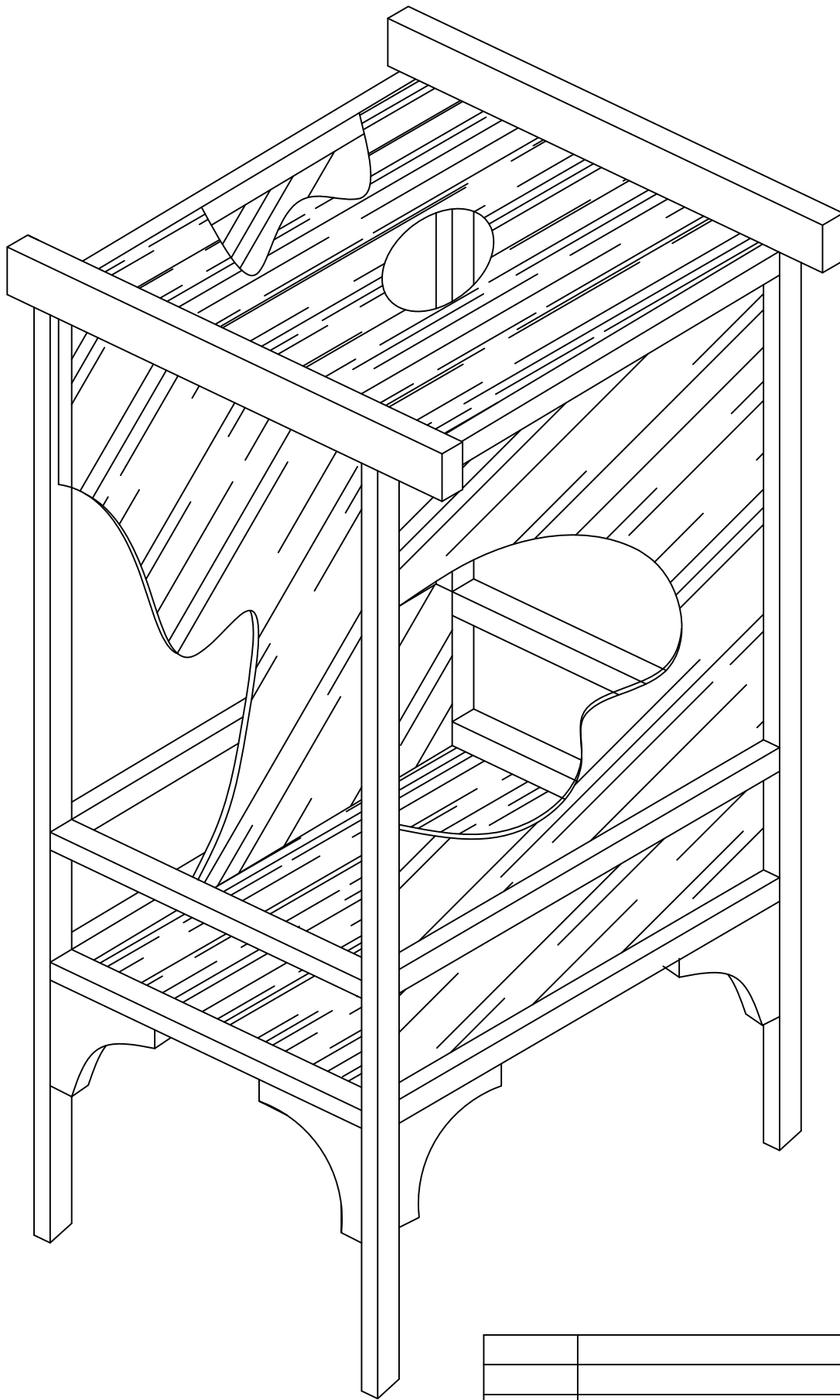
TITLE	Tray Drier 1991 model	DRAWN	TRACE	CHK	 	SCALE	1:10
MATERIAL	DRAWING No. TD91-01						

ITEM	DESCRIPTION	PART NUMBER	QUANTITY	COMMENTS	CHECKED
1	Operating Handle	TD91-10			
2	Operating Lever	TD91-09			
3	Operating lever Extension	TD91-09			
4	Hook Rod	TD91-10			
5	Hook Rod Bracket	TD91-10			
6	Hook Rod Clip	TD91-11			
7	Lever Cam Plate	TD91-09			
8	Cam Plate	TD91-09			
9	Cam Shaft	TD91-09			
10	Cam Connecting Rod	TD91-10			
11	Lifting Rod	TD91-10			
12	Rod Adjusters	TD91-10			
13	Shaft Stop Plates	TD91-11			
14	Finger Stop Plates	TD91-12			
15	Lower Lifting Bracket	TD91-06			
16	Tray Drier Frame	TD91-04			



Tray Drier 1991 Model

DO NOT SCALE

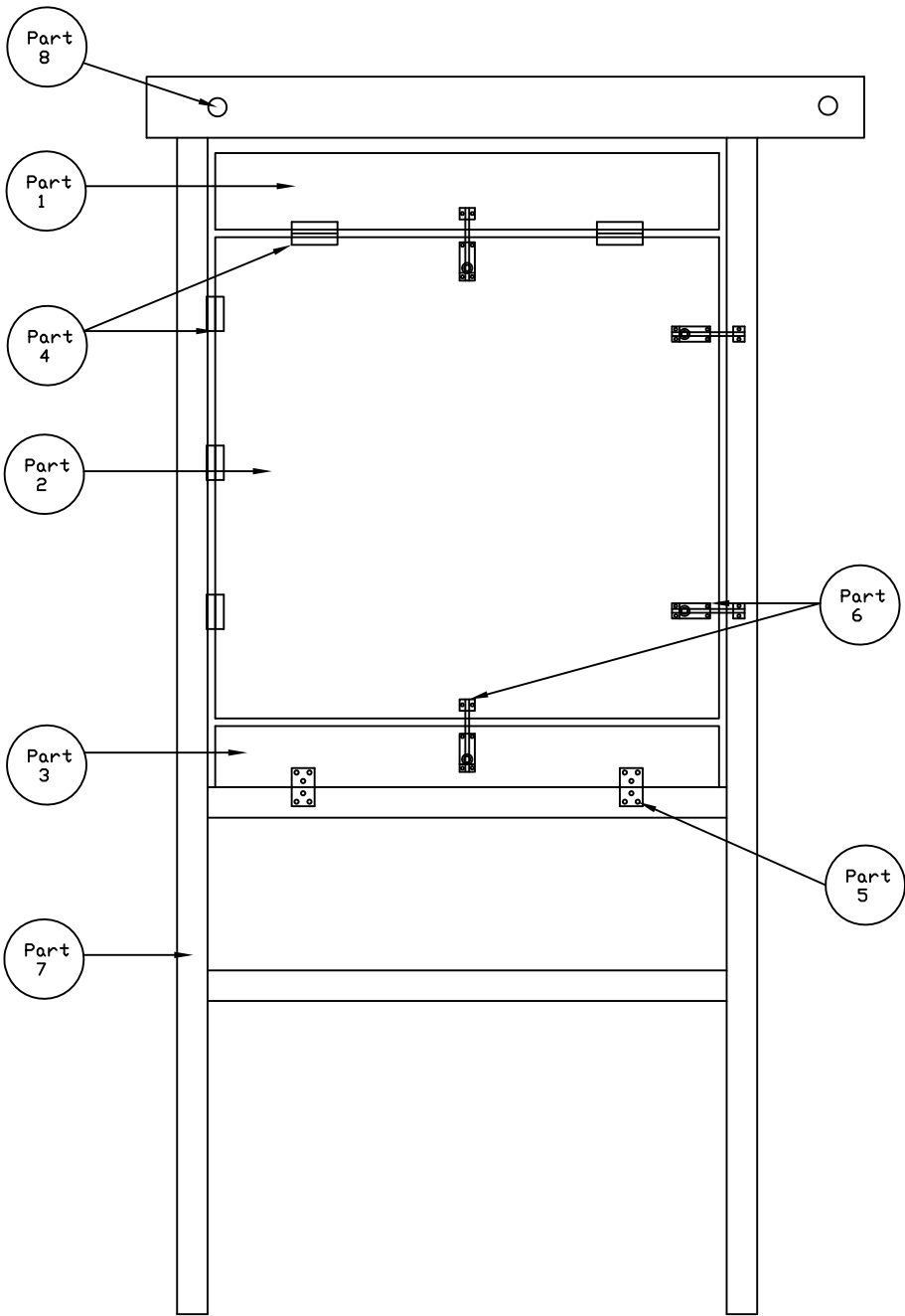


No.	Description	CHK	AP'D	DATE

REVISIONS

TITLE	Frame Panelling	DRAWN	TRACE	CHK		SCALE
		A.P.D	-	-		1:8
MATERIAL	DRAWING No. TD91-02					

DO NOT SCALE



No.	Description	DRG No	QTY	Material
1	Tray Loading door	TD91-03	1	825x150
2	Access Door	TD91-03	1	825x780
3	Tray Unloading door	TD91-03	1	825x100
4	Hinges	TD91-03	5	75 Steel Butt
5	Hinges	TD91-03	2	50 Steel back flap
6	Locking bolts	TD91-03	4	75 Long
7	Tray Drier Frame	TD91-04		
8	Bearing Rail	TD91-11		

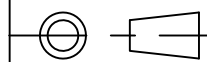
PARTS

TITLE Access Doors

DRAWN
A.P.D

TRACE
-

CHK
-

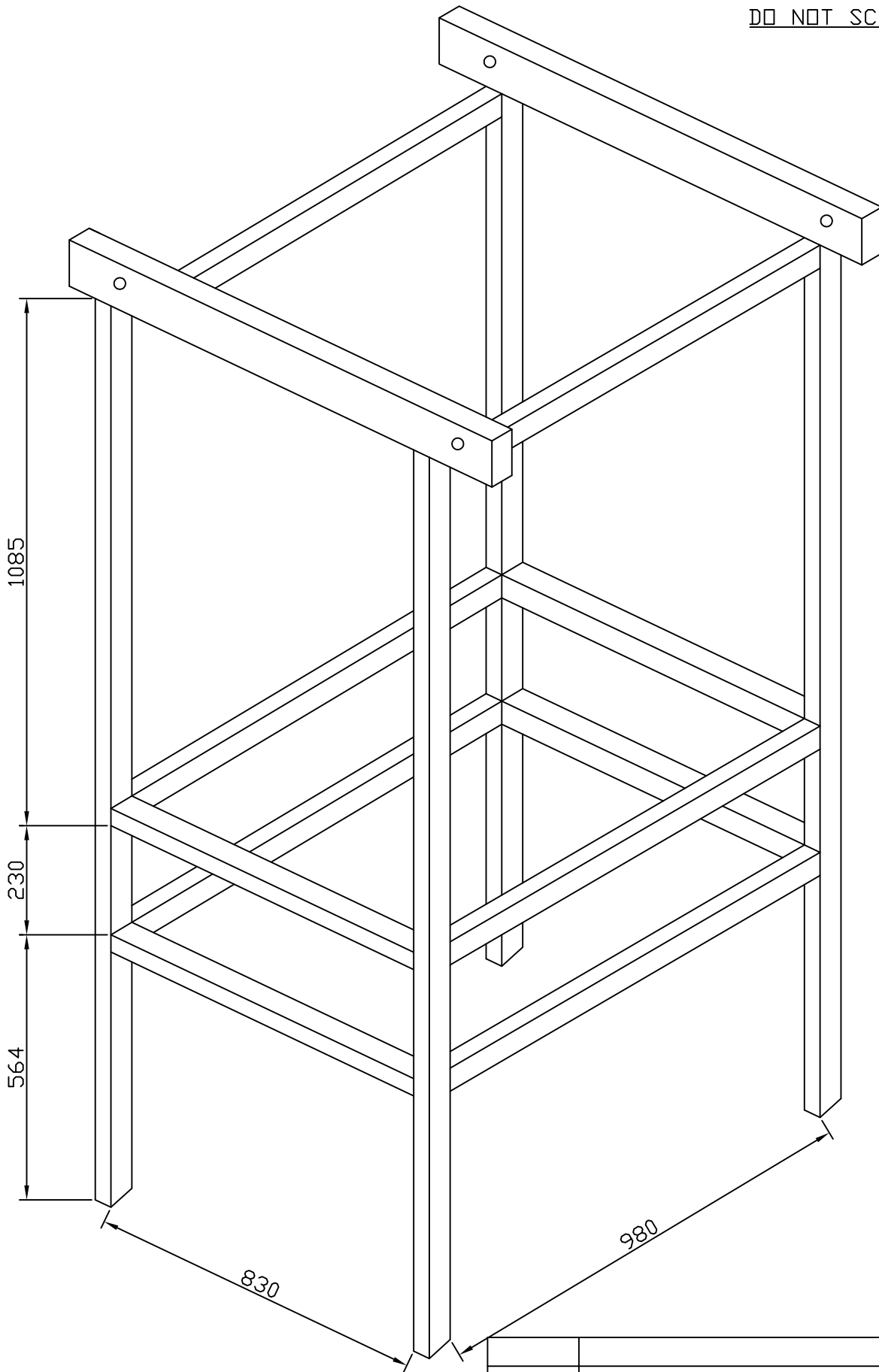


SCALE
1:8

MATERIAL see list

DRAWING No. TD91-03

DO NOT SCALE

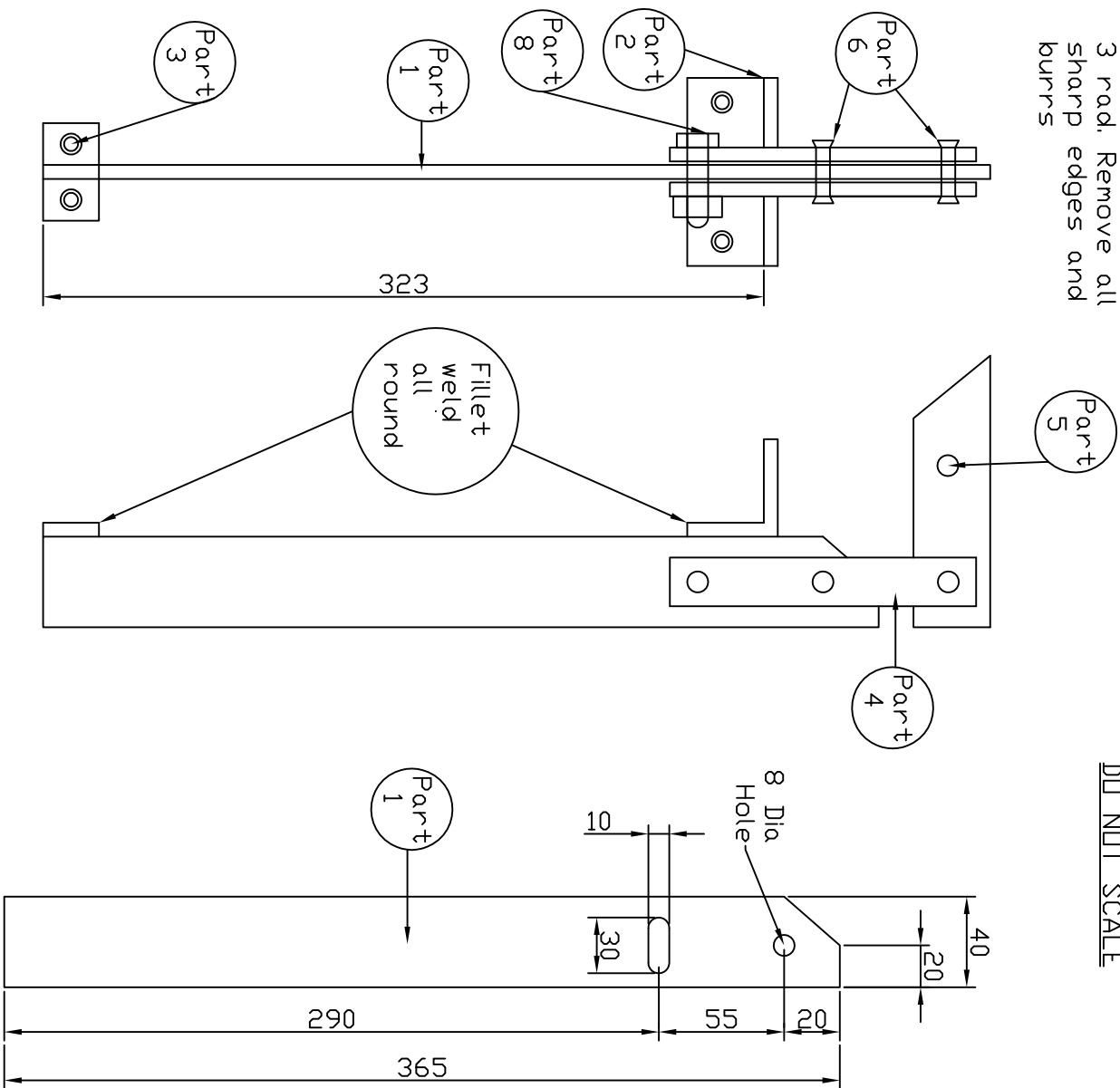


No.	Description	CHK	AP'D	DATE

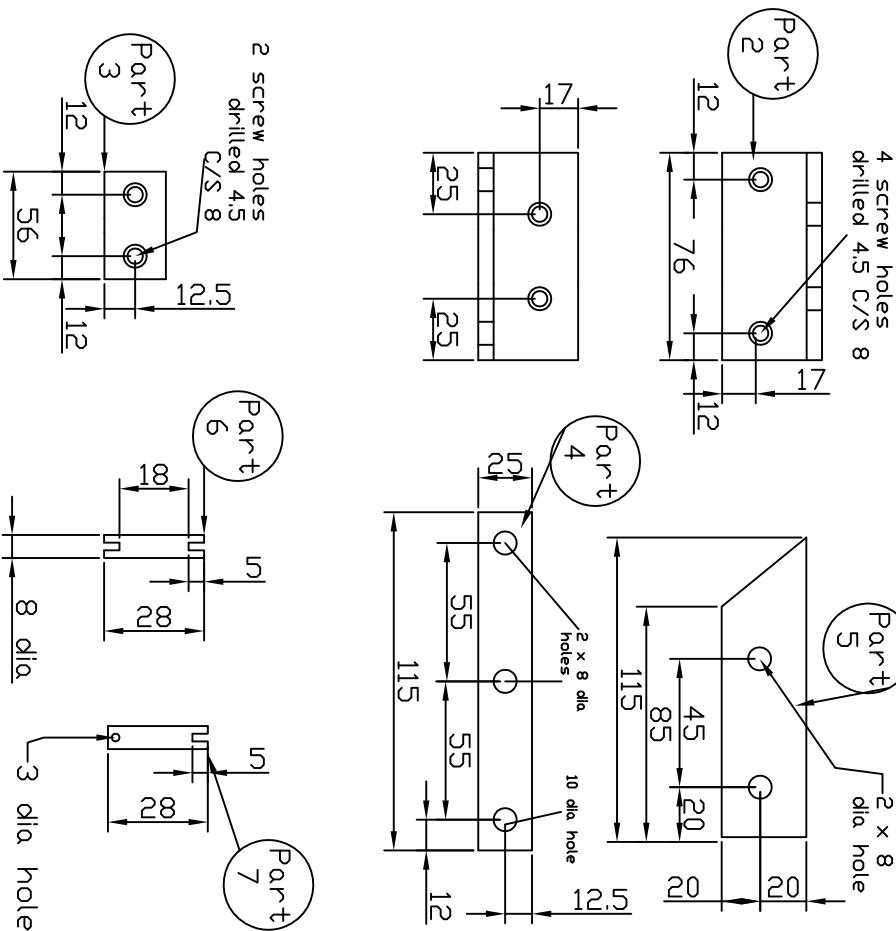
TITLE	Tray drier frame	DRAWN	TRACE	CHK		SCALE
MATERIAL		A.P.D	-	-		1:8
		DRAWING No. TD91-04				

Radius all corners
3 rad. Remove all
sharp edges and
burrs

DD NOT SCALE



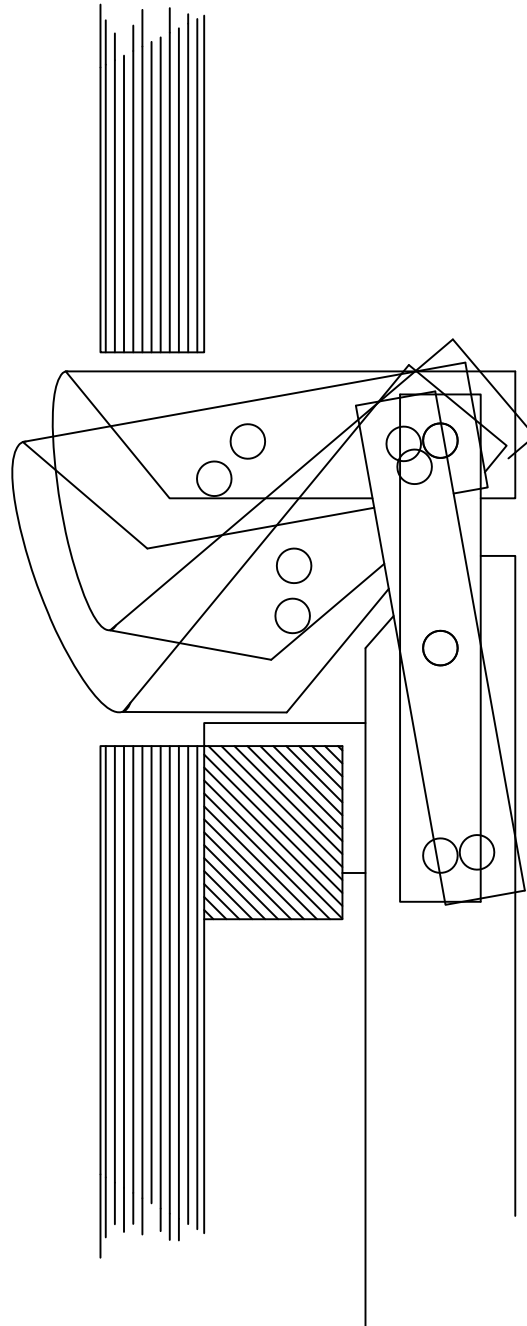
PRT	Dwg No	Description	QTY	Material
	TD91-01	Complete Assembly	4	See below
1	TD91-01	Main Plate	1	40x6x365 M/S Bar
2	TD91-01	Top attachment angle	1	40x40x6x75 M/S Bar
3	TD91-01	Bottom attachment plate	1	25x6x56 M/S bar
4	TD91-01	Linking plates	2	25x6x135 M/S bar
5	TD91-01	Lifting Fingers	1	40x6x115 M/S bar
6	TD91-01	Fixed clevis pin	2	8 Diax28 M/S rod
7	TD91-01	Removable clevis pin	1	8 Dia x28 M/S rod
8	TD91-01	Locking bolt and nut	1	10x30 Hex Steel



See drawing TD91-08 for manufacture details


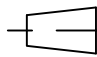
No.		Description		CHK	AP'D	DATE
REVISIONS						
TITLE Tray Assembly						
MATERIAL See list						
DRAWN A.P.D			TRACE		CHK	SCALE 1:8
DRAWING No. TD91-06						

DO NOT SCALE



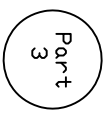
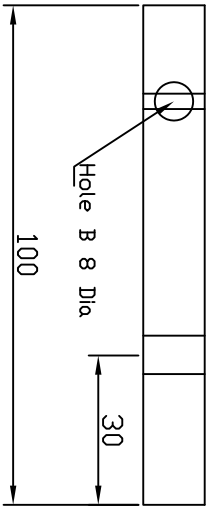
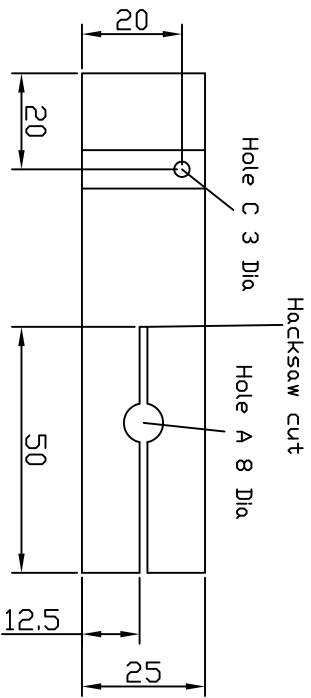
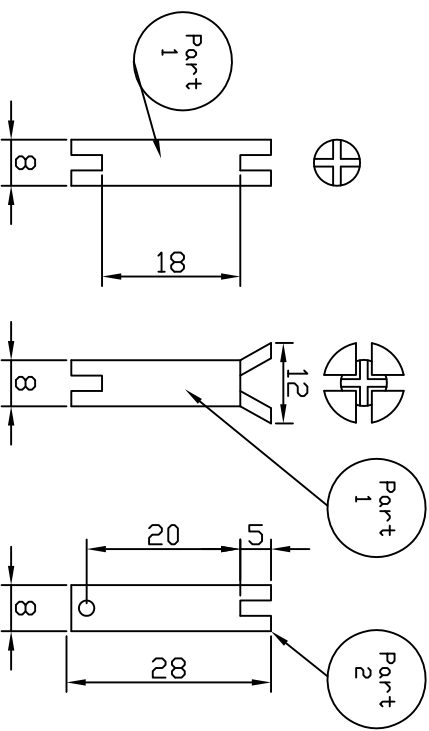
No.	Description	CHK	AP'D	DATE

REVISIONS

TITLE	Finger Development	DRAWN	A.P.D	TRACE	-	CHK	-	 	SCALE	1:1
MATERIAL	DRAWING No. TD91-07									

DD NDT SCALE

PRT	Dwg No	Description	QTY	Material
1	TD91-01	Fixed clevis pin		8 diax 28 Steel Rod
2	TD91-01	Removeable clevis pin		8 diax 28 Steel Rod
3	TD91-05	Clevis pin making tool		25x12x100 M/S Bar

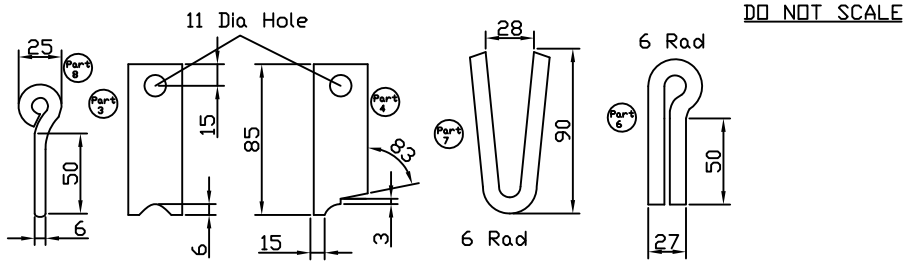


Making Clevis Pins

1. Cut off required no of pins, to finished length
2. Place pin in hole A level with bottom face of tool
3. Clamp tool in vice with pin level to end of vice jaw
4. File small chamfer on the end of the pin and hacksaw two cuts at 90 degrees 5 mm deep
5. Repeat for second end
6. Place tool on a solid metal surface, put pin in holes A, drive a cold chisel into the sawcuts to spread the end. DD NDT OVERSPREAD
7. Assemble the parts
8. Clamp a cold chisel in the vice cutting edge upwards place assembly on top with one of the opened out slots on the chisel blade, drive a second chisel into the opposite end saw cuts to open out the second end.
9. The removeable pins are made as above, to drill the hole place pin in hole C and clamp in machine vice locking the spread end of the pin between the vice jaw and the tool, drill hole through tool and pin.

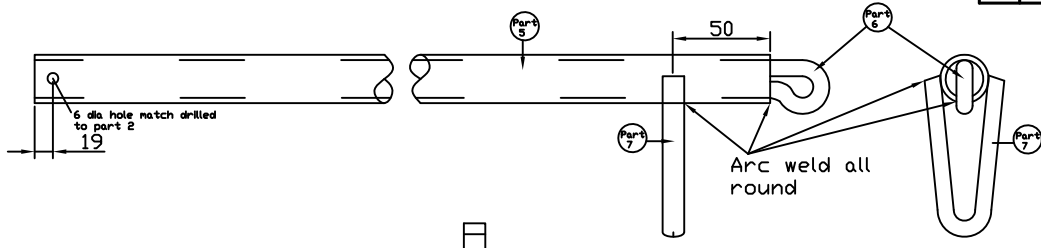
No.	REVISIONS	Description	CHK	AP'D	DATE

TITLE	Clevis Pin	DRAWN	A.P.D	TRACE	-	CHK	-	DRAWING No.	TD091-08	SCALE	1:1
MATERIAL	Mild Steel										

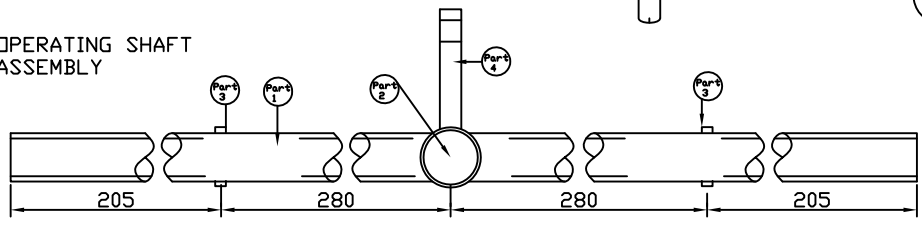


DO NOT SCALE

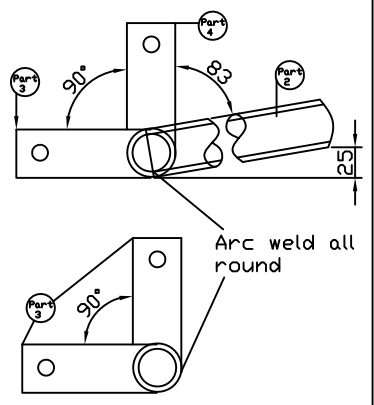
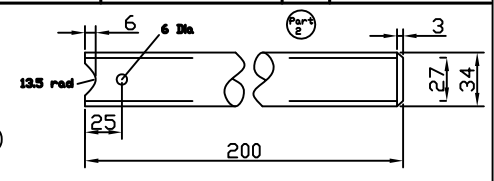
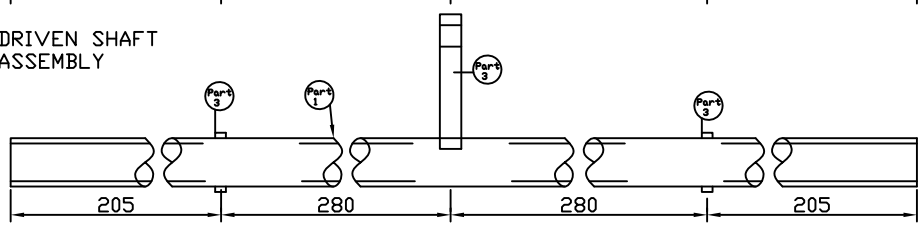
PRT	Drg No	Description	QTY	Material
1	TD91-06	Can shaft	2	2700x980 Water pipe
2	TD91-06	Operating lever	1	3400x200 Water pipe
3	TD91-06	Can plates	5	30x6x85 M/S Bar
4	TD91-06	Can plate	1	30x6x85 M/S bar
5		Operating lever extension	1	2700x1000 Water pipe
6		Handle Ring	1	10 dia x 64 M/S rod
7		Hook Rod Link	1	10 dia x 240 M/S rod
8		Operating lever pin	1	6 Dia x 85 M/S rod



OPERATING SHAFT ASSEMBLY

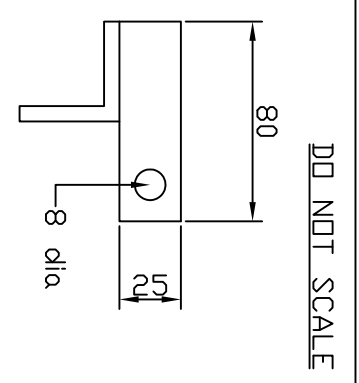
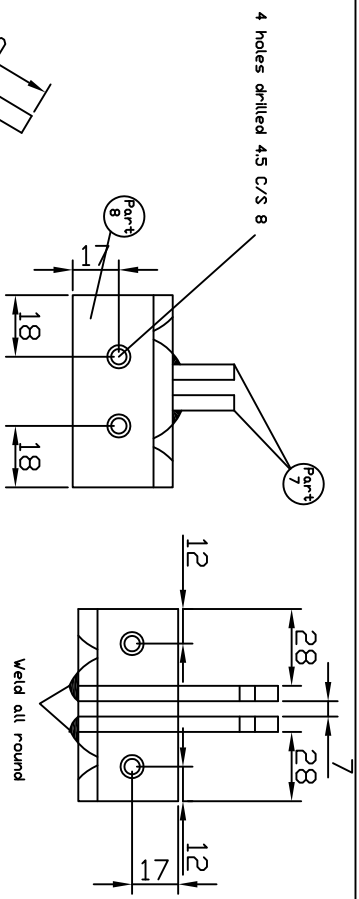


DRIVEN SHAFT ASSEMBLY

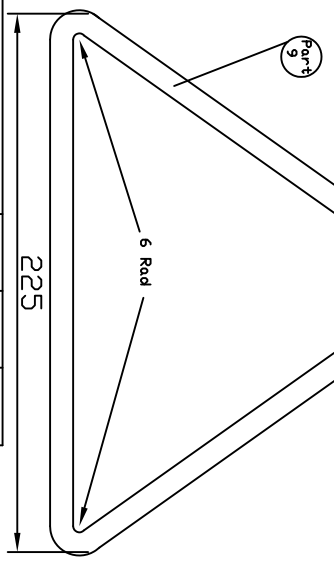
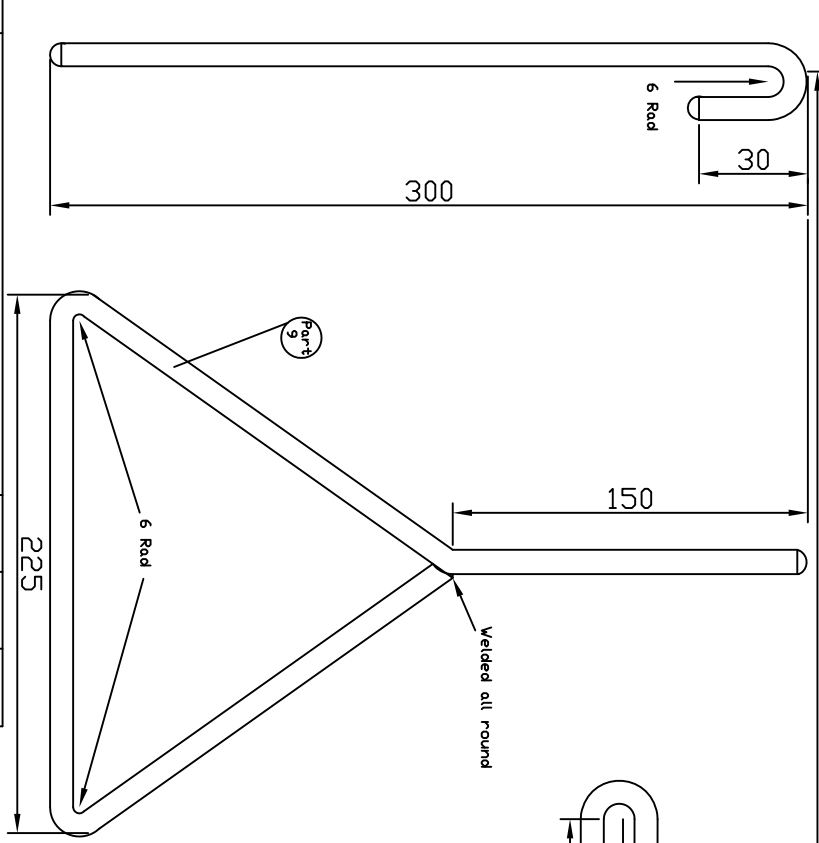
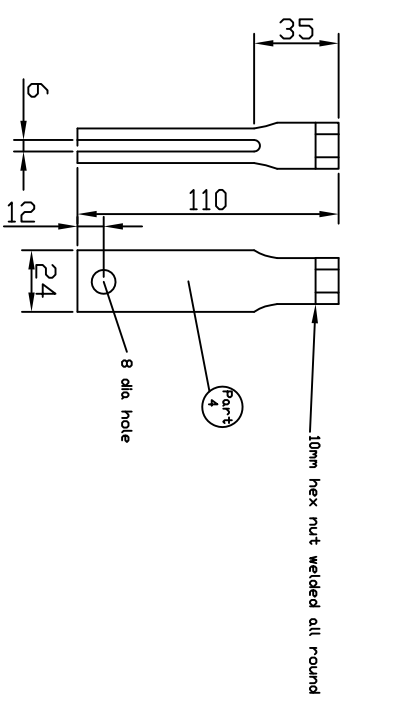
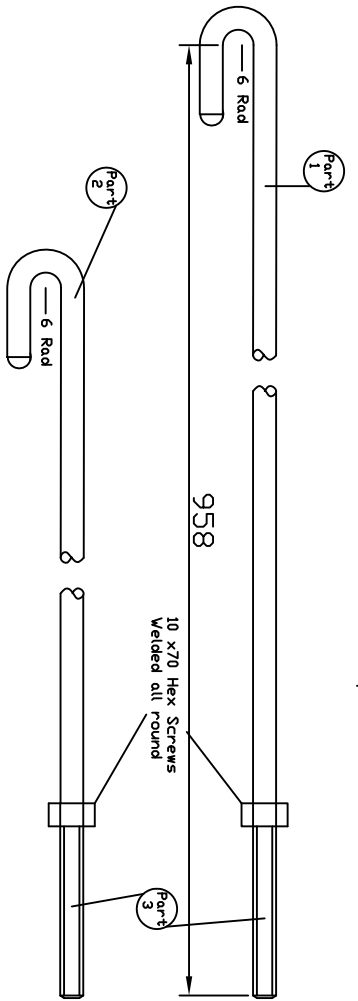
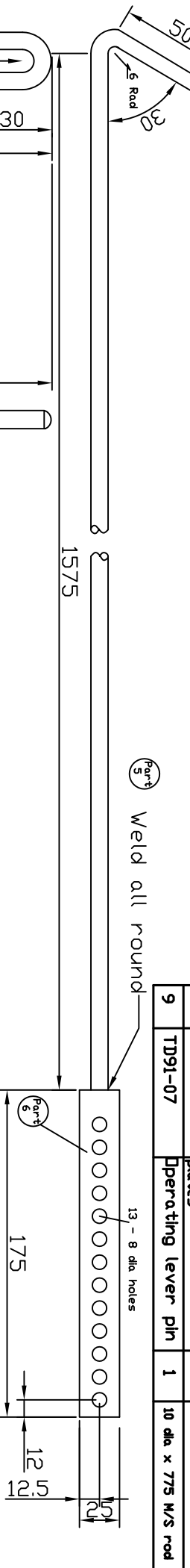


See drawing TD91-08 for manufacture details			
No.	Description	CHK	AP'D DATE
REVISIONS			

TITLE Tray Assembly	DRAWN A.P.D	TRACE -	CHK -		SCALE 1:2
MATERIAL	DRAWING No. TD91-09				



PRT	Dwg No	Description	QTY	Material
1	TD91-07	Lifting rods	4	10 dia x940 M/S Rod
2	TD91-07	Cam connecting rod	1	10 dia x870 M/S Rod
3	TD91-07	Hex steel screws	5	10 dia x70 long
4	TD91-07	Rod adjusters	5	1700 x 102 water pipe
5	TD91-07	Hook rod	1	10 dia x 1535 M/S rod
6	TD91-07	Hook rod adjuster	1	25x6x175 M/S Bar
7	TD91-07	Hook Rod bracket	1	40x40x6x70 M/S angle
8	TD91-07	Hook Rod bracket	2	25x6x80 M/S bar
9	TD91-07	Operating lever pin	1	10 dia x 775 M/S rod



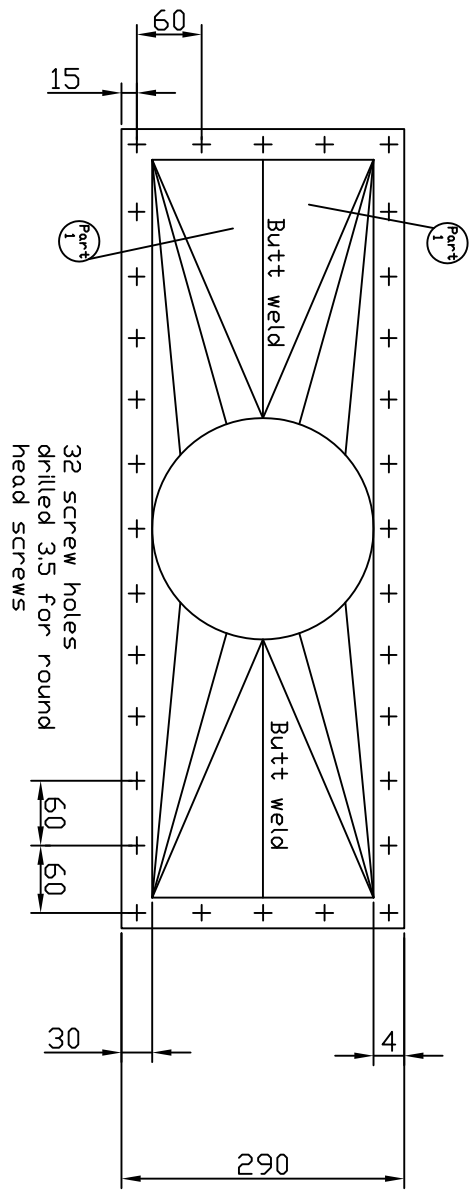
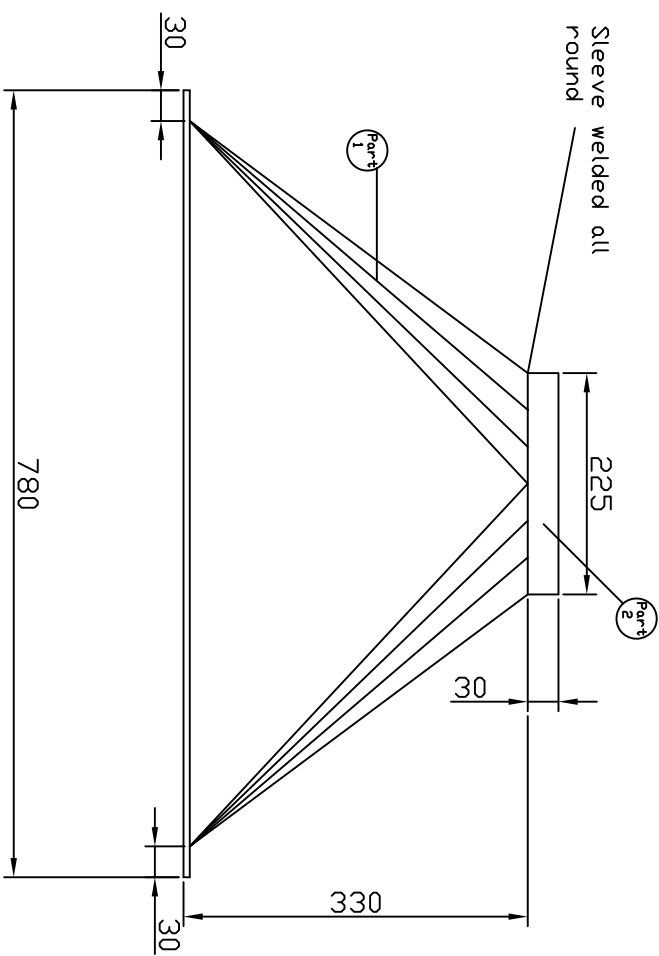
NO. REVISIONS		Description		CHK	AP'D	DATE

TITLE	DRAWN		TRACE	CHK	SCALE
Rod assemblies and operating handle	A.P.D	-	-	-	1:2

MATERIAL	DRAWING NO.
	TD91-10

DD NOT SCALE

PRT	Dwg No	Description	QTY	Material
1	TD91-01	Connector body 2x1/2	2	1040x360x1 Steel sheet
2	TD91-04	Connection sleeve	1	30x715x1 Steel sheet



No.	Description	CHK	AP'D	DATE

TITLE	Air Inlet connector
MATERIAL	

DRAWN	A.P.D	TRACE	-	CHK	-			SCALE	1:4
DRAWING No.		TD91-11							